

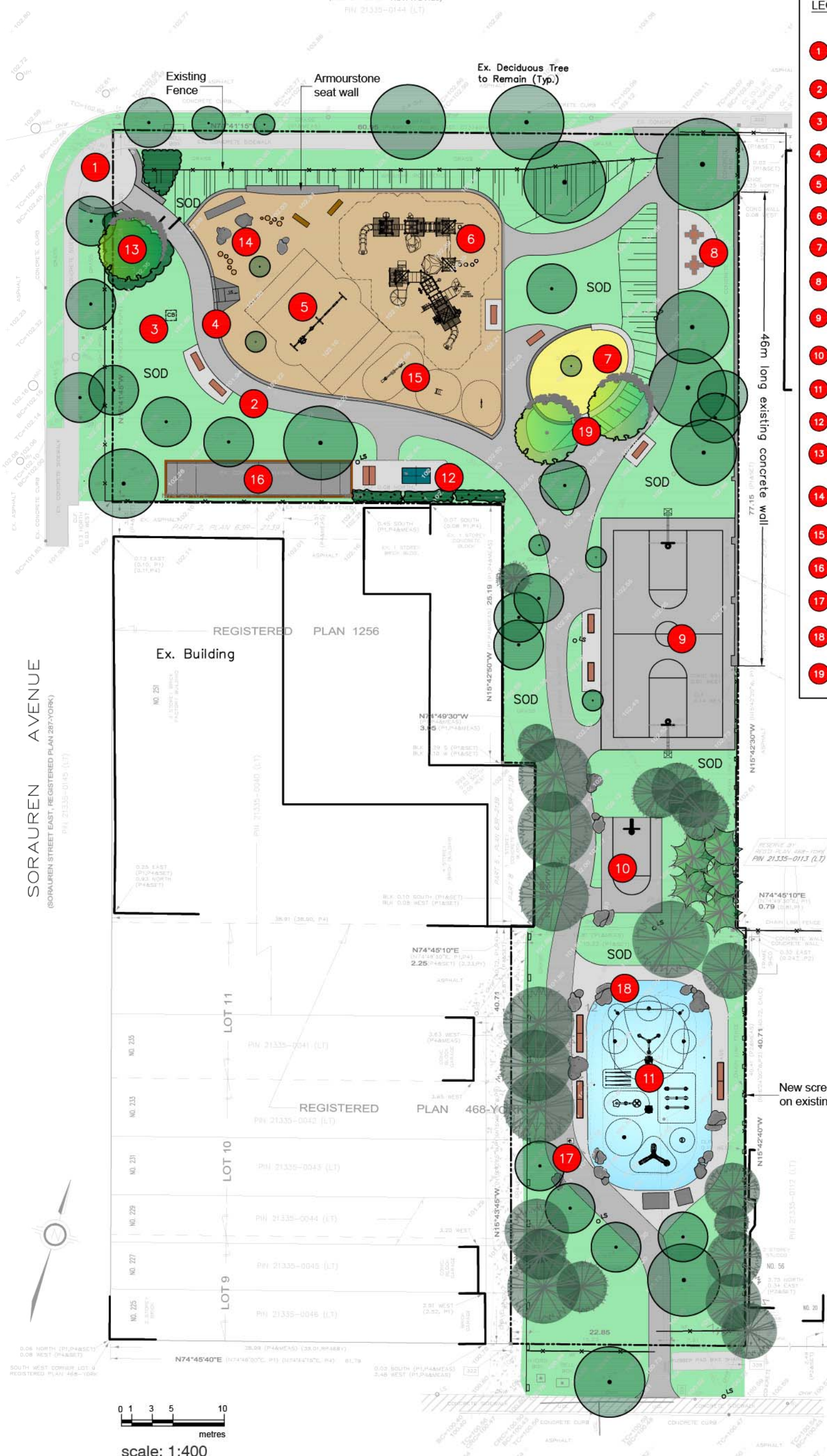
FINAL CONCEPT PLAN

CHARLES G. WILLIAMS PARK

JANUARY 2020

WABASH AVENUE
(DEDICATED BY INST. WG4125)
PIN 21335-0144 (L.T.)

- LEGEND**
- 1 CONCRETE PARK ENTRANCE COMPLETED WITH ARMOURSTONE WALLS & FEATURE PLANTING
 - 2 ASPHALT WALKWAYS & BENCH SEATING
 - 3 RE-LOCATED CATCH BASIN
 - 4 ACCESSIBLE RAMP INTO PLAY AREA
 - 5 SWINGS
 - 6 JUNIOR & SENIOR PLAYGROUND
 - 7 SAND BOX / CONCRETE SEAT WALL
 - 8 REINSTATE CHESS TABLES ON CONCRETE.
 - 9 ASPHALT BASKETBALL COURT PAVING AND NETS
 - 10 JUNIOR SINGLE BASKETBALL COURT
 - 11 WADING POOL CONVERSION TO SPLASH PAD
 - 12 PING PONG TABLE
 - 13 FUTURE COMMEMORATIVE TREE PLANTING AREA (i.e VIMY OAK)
 - 14 GRANITE BOULDERS AND LOGS IN PLAY AREA
 - 15 SEESAW AND SPRINGS TOYS
 - 16 BOCCIE COURT
 - 17 NEW WATER BOTTLE FILLER
 - 18 GRANITE BOULDERS IN SPLASH PAD AREA
 - 19 NEW SHADE TREES AT SAND PLAY AREA



0 1 3 5 10
metres
scale: 1:400

WRIGHT AVENUE
(DUNCAN STREET, REGISTERED PLAN 468-YORK)